



# Custom Pins and Sleeves Quote Request

Email Completed form to: [dmeus-csspecials@dme.net](mailto:dmeus-csspecials@dme.net)

## Custom Pins

Quantity: \_\_\_\_\_

Choose a pin type:

EX (35–43 HRC core hardness with 65–70 HRC case hardness)

THX (50 HRC–55 HRC core hardness with 65–70 HRC case hardness)

CX (50–55 HRC through hard)

C (30–35 HRC through hard)

Material H-13:

Other \_\_\_\_\_

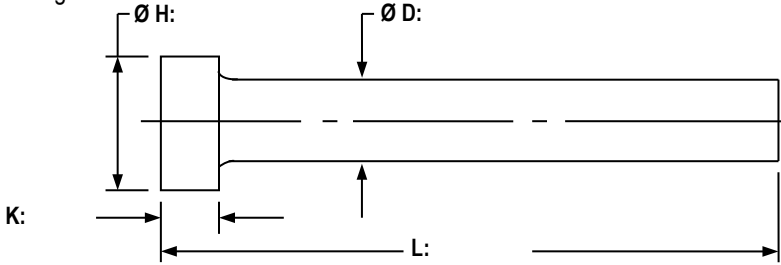
Hardness \_\_\_\_\_ RC

Nitrided: Yes  No

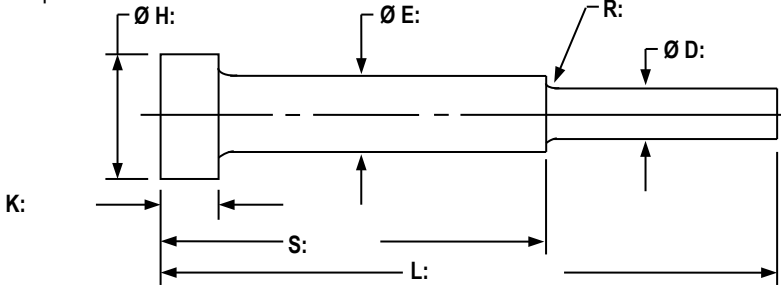
Comments \_\_\_\_\_

Tolerances: Std  Other  (provide)

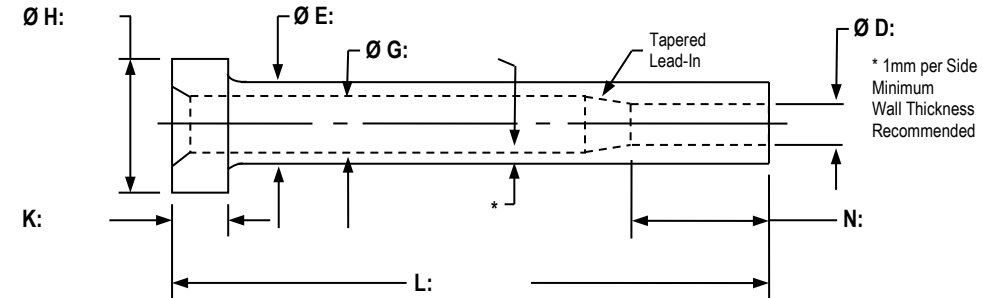
Straight Pin



Step Pin



Sleeve



## Custom Sleeves

Quantity: \_\_\_\_\_

Nitride on OD (S)

Nitride on OD + ID (SND)

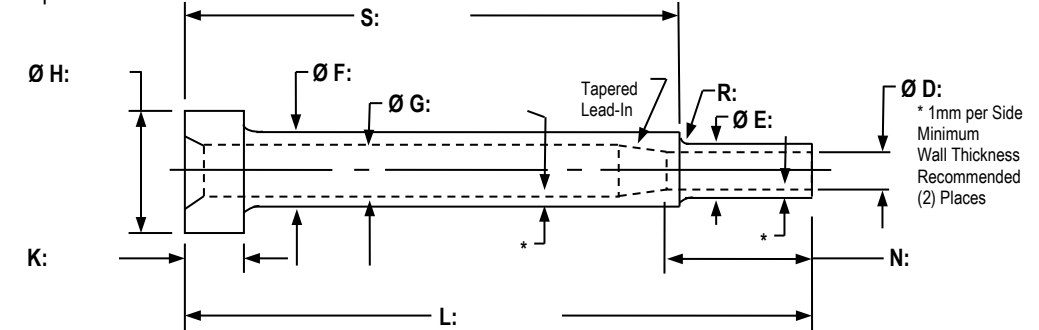
Material H-1:

Other \_\_\_\_\_

Hardness \_\_\_\_\_ RC

Comments \_\_\_\_\_

Step Sleeve



Company name: \_\_\_\_\_

Contact name: \_\_\_\_\_

Phone: \_\_\_\_\_

Address: \_\_\_\_\_

City: \_\_\_\_\_

ZIP/Postal Code: \_\_\_\_\_

DME account #: \_\_\_\_\_

P.O. #: \_\_\_\_\_

FAX: \_\_\_\_\_

E-mail: \_\_\_\_\_

State/Province: \_\_\_\_\_

Country: \_\_\_\_\_

Shipping method:

- UPS Ground
- UPS 2nd Day Air
- UPS Next Day
- FedEx
- Other